



01452 690553



sales@applebys.estate



www.applebysestateagents.co.uk



156 Cheltenham Road, Longlevens, GL2 0JR

£325,000

This delightful three DOUBLE bedroom home presents a rare opportunity, having been cherished by the same owner's for an impressive 57 years, this property is now ready for a new chapter. With a wealth of potential, it invites you to unleash your creativity and transform it into your dream home.

Situated in a well-established area of Longlevens the property benefits from convenient access to local amenities, schools, and transport links, making it an ideal choice for families and professionals alike.

This is an opportunity not to be missed, embrace the chance to put your own stamp on this 1930's property and make it your own.

Entrance Hall

Living Room 12'8 x 10'6 (3.86m x 3.20m)

Dining Room 12'2 x 10'5 (3.71m x 3.18m)
8'9 x 6'2 ft into extension.

Kitchen 8'9 x 8'5 (2.67m x 2.57m)

Bedroom 1 12'2 x 11'9 (3.71m x 3.58m)

Bedroom 2 12'2 x 9'11 (3.71m x 3.02m)

Bedroom 3 8'9 x 8'8 (2.67m x 2.64m)

Bathroom

OUTSIDE

The front driveway offers parking for two cars,
side rear access to the rear garden

The SOUTH FACING rear garden is mostly laid
to lawn with a large patio, outside WC and
utility, with a garden shed to the rear of the
garden.

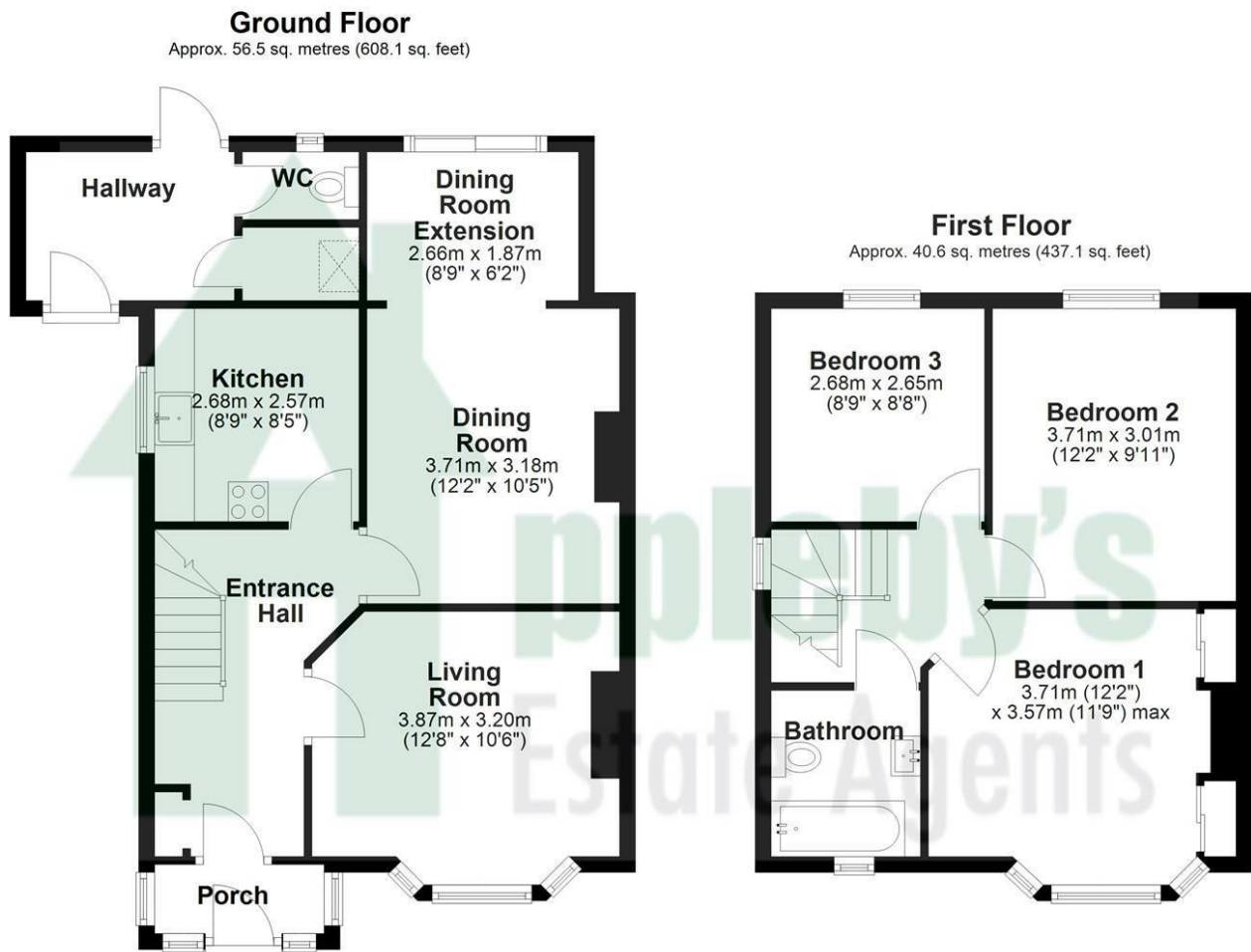
Services

Mains drainage, gas central heating and Solar
Panels (owned by the property)
Gloucester City Council tax band C

Tenure

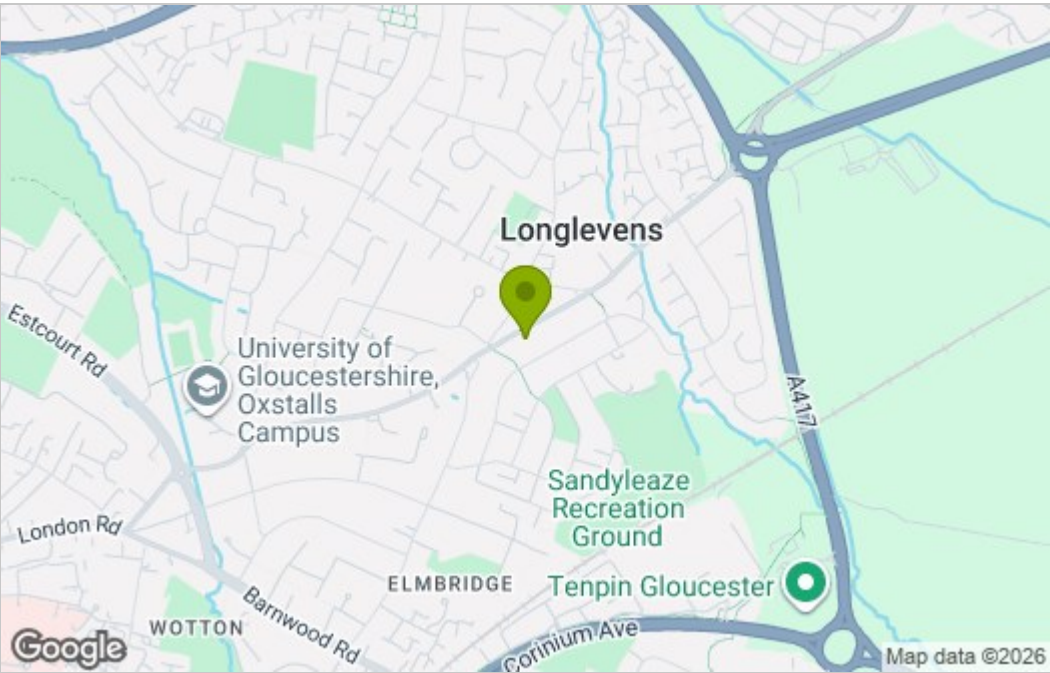
Freehold

Floor Plan

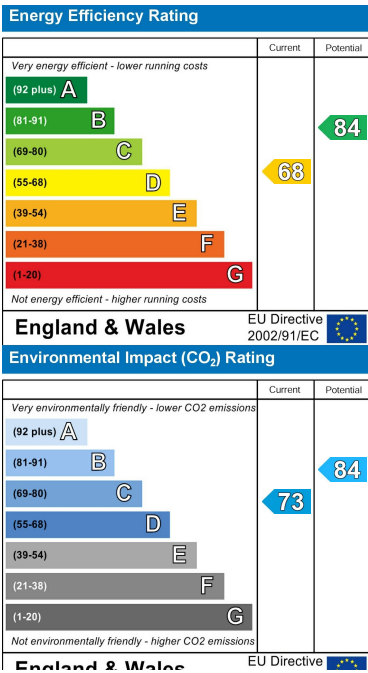


Total area: approx. 97.1 sq. metres (1045.2 sq. feet)

Area Map



Energy Efficiency Graph



These particulars, whilst believed to be accurate are set out as a general outline only for guidance and do not constitute any part of an offer or contract. Intending purchasers should not rely on them as statements of representation of fact, but must satisfy themselves by inspection or otherwise as to their accuracy. No person in this firms employment has the authority to make or give any representation or warranty in respect of the property.